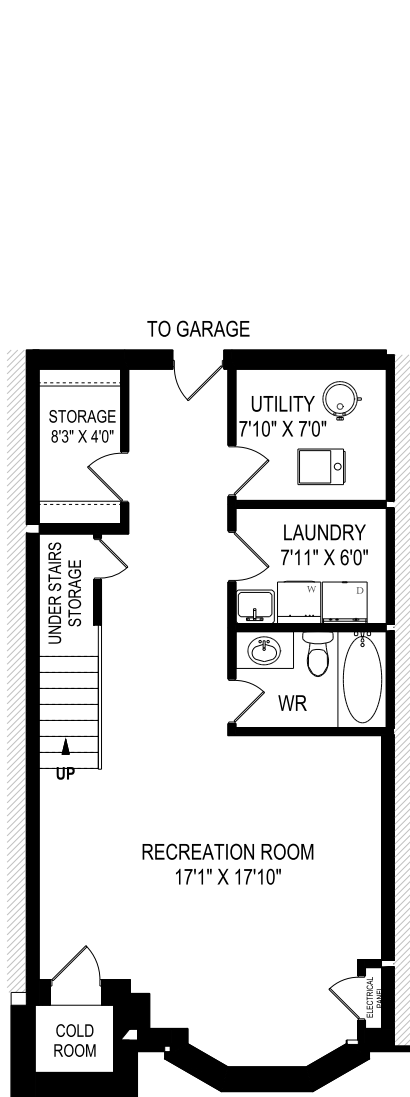
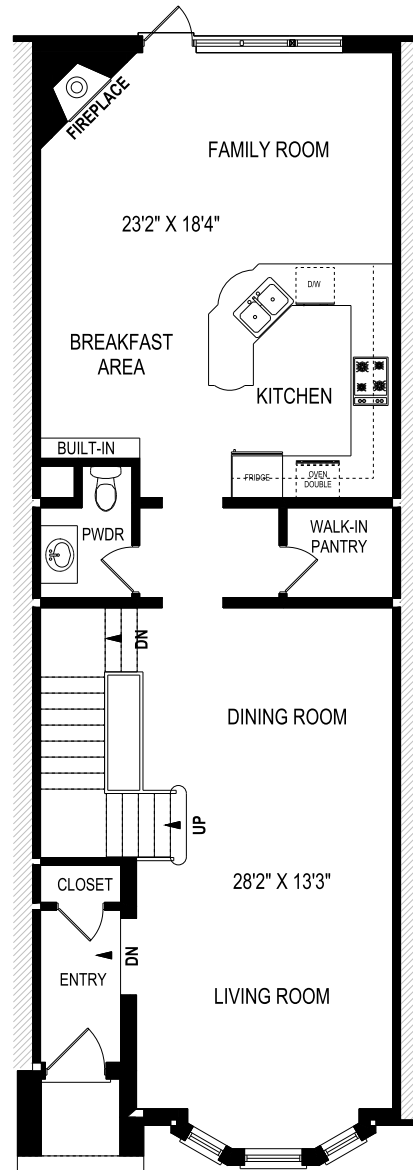


25 Webster Avenue, Toronto

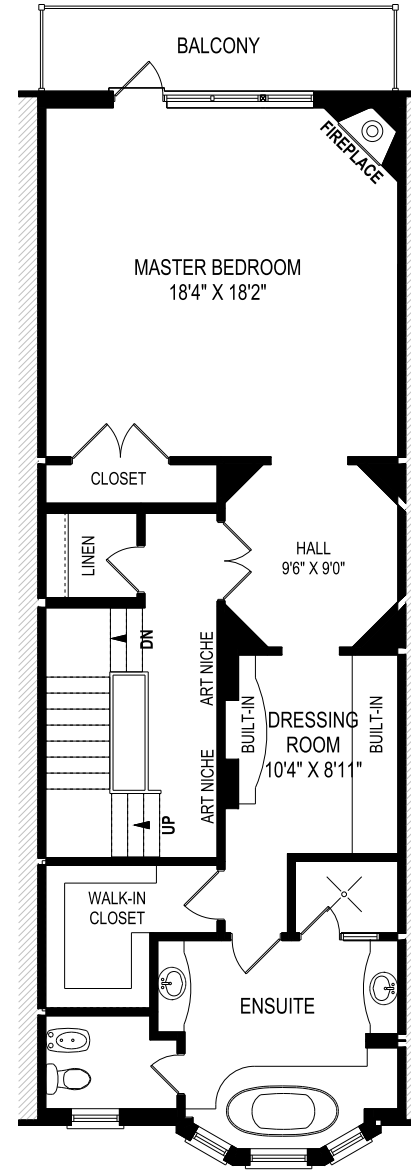
FLOOR PLAN



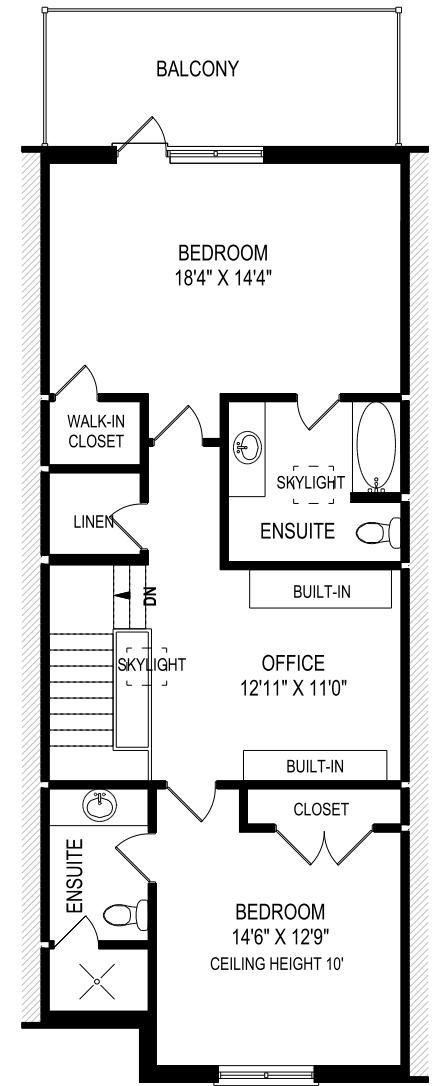
LOWER LEVEL FLOOR PLAN
731 SQUARE FEET
CEILING HEIGHT 8'6"



MAIN FLOOR PLAN
1094 SQUARE FEET
CEILING HEIGHT 10'



SECOND FLOOR PLAN
1049 SQUARE FEET
CEILING HEIGHT 9'



THIRD FLOOR PLAN
920 SQUARE FEET
CEILING HEIGHT 8'

January 9, 2019

Note: Although measurements and area believed to be accurate they should be considered approximate. This drawing was prepared by Plans4U for the sole benefit and use by the client. No third party may rely on this drawing without the receipt of reliance letter from Plans4U