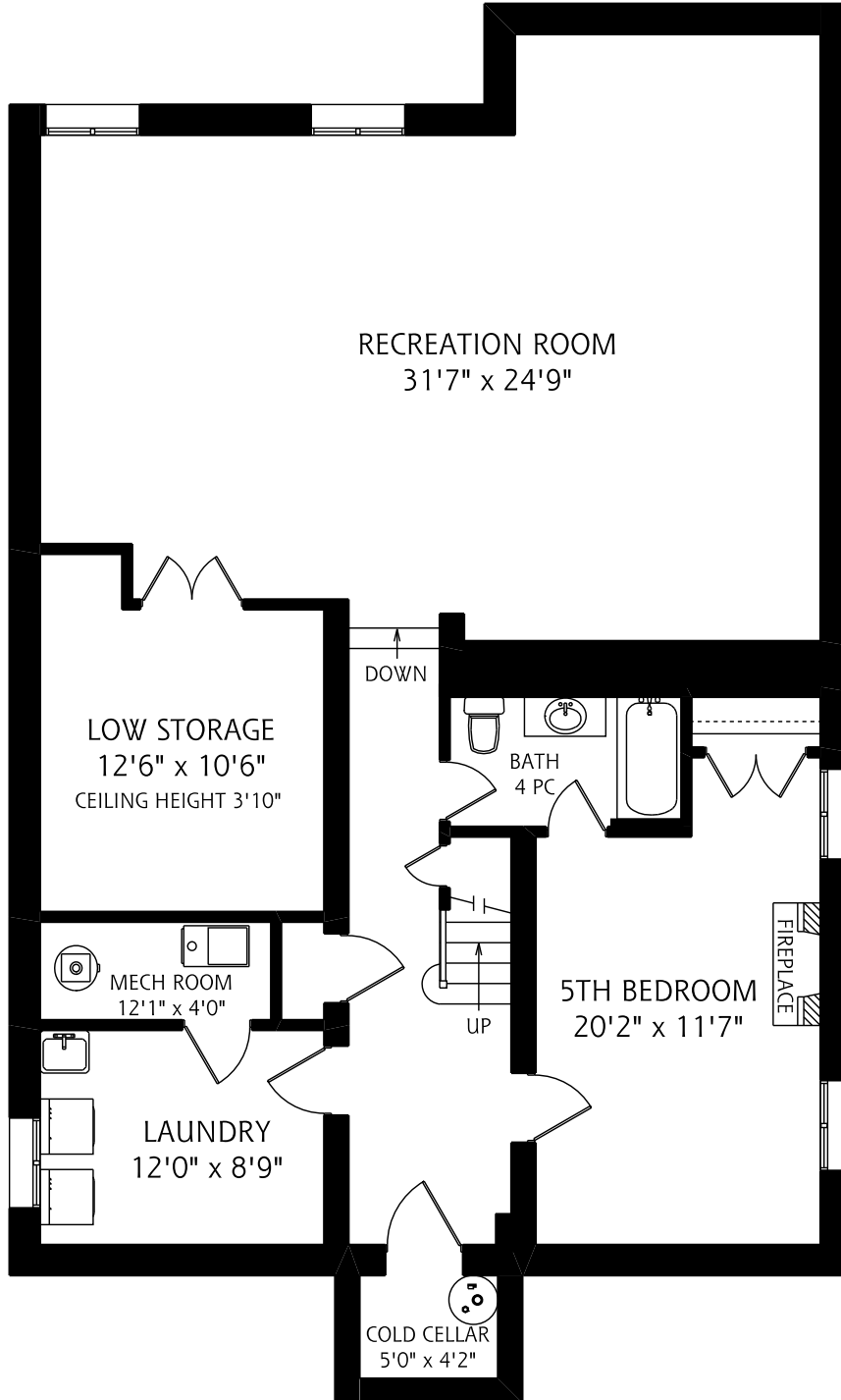
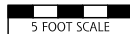


# 181 RIDLEY BOULEVARD

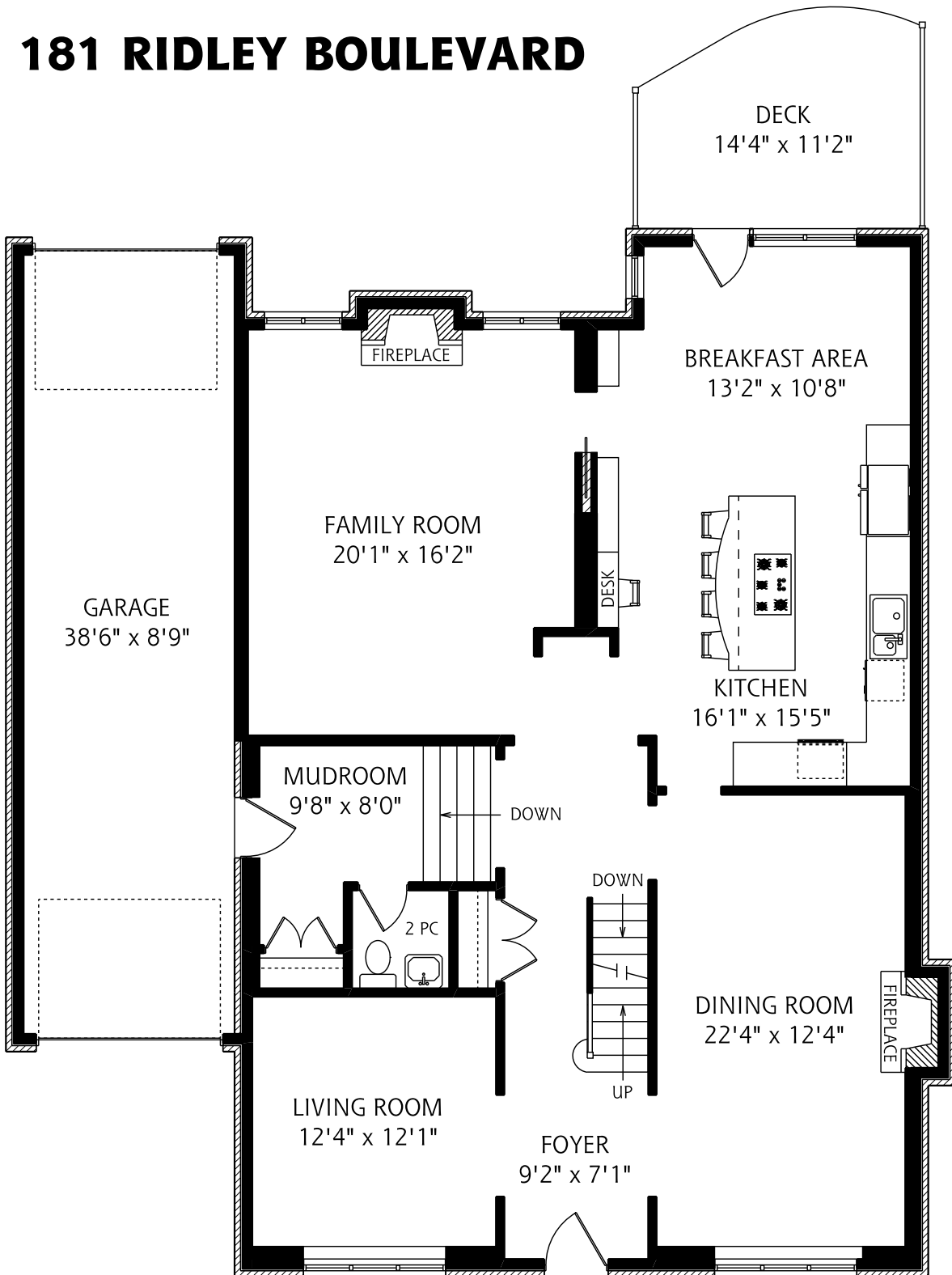


LOWER LEVEL  
1,535 SQUARE FEET



ALL MEASUREMENTS SHOULD BE CONSIDERED APPROXIMATE

# 181 RIDLEY BOULEVARD



MAIN FLOOR  
1,720 SQUARE FEET



ALL MEASUREMENTS SHOULD BE CONSIDERED APPROXIMATE



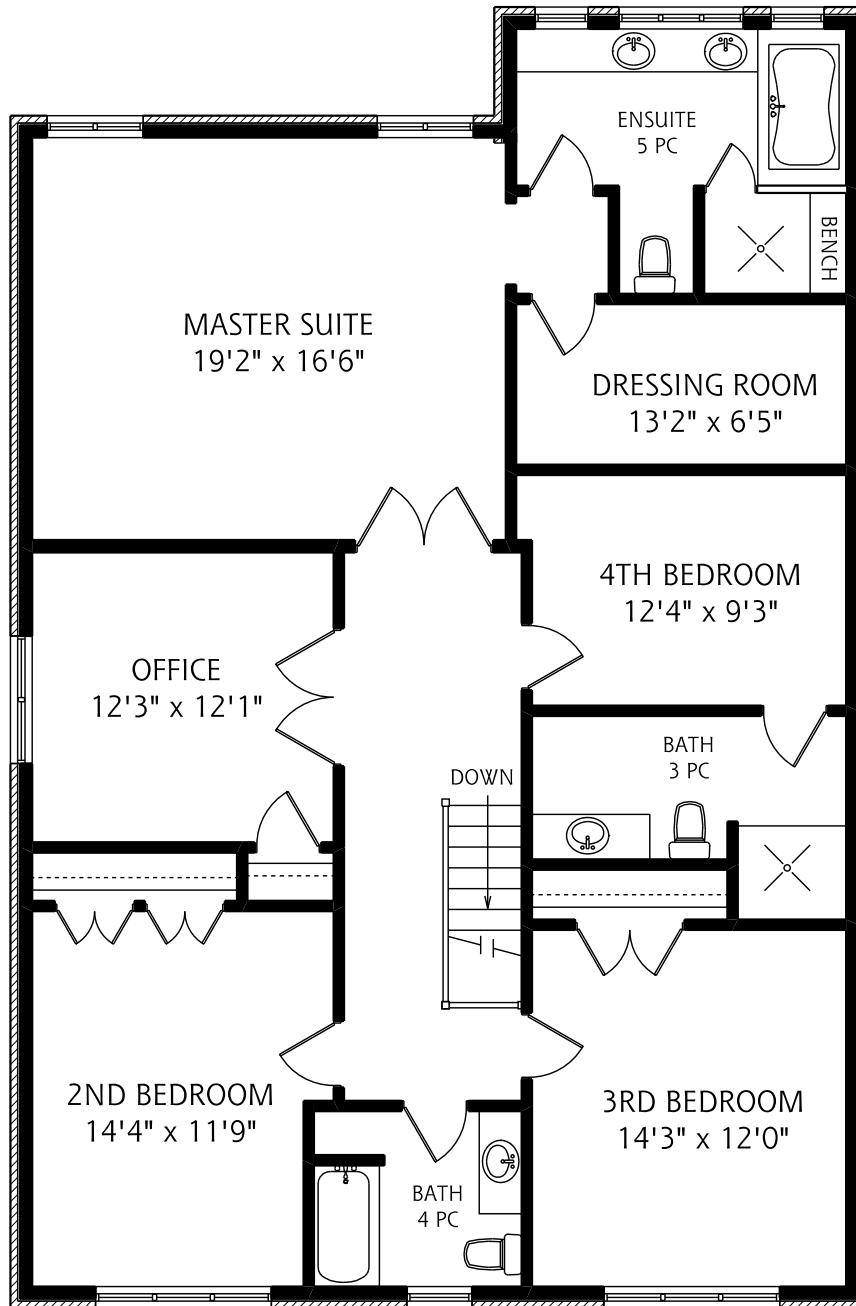
**REAL FLOOR PLANS**  
www.realfloorplans.com

JUN 07, 2011 - COLIN THOMSON - 416-800-7526

[TORONTO HOME SPECIALIST]  
**susan BANDLER**

(416) 925 - 9191

# 181 RIDLEY BOULEVARD



SECOND FLOOR  
1,710 SQUARE FEET



ALL MEASUREMENTS SHOULD BE CONSIDERED APPROXIMATE